

Places
to
*live
well*

Living well is a way of being. It is an ability to make a positive difference in your own life, and those you hold close. It means curating your space, so you're always surrounded by the things and the people you love. And staying connected to what matters most, in a place and environment that's truly yours.

We invite you to *live well*

Ensuring you live well is at the heart of every home we create. At Lendlease we know how profoundly your home is intrinsic to your way of life; and we want you to love and be proud of yours.

That means creating homes that suit your life now, and into the future. It's about creating places that connect you with others and immerse you in nature. And it's about understanding that great homes are located in vibrant, thriving communities.

For over 60 years we have built our reputation on seeing the value, opportunity and beauty in places that others may overlook. We're passionate about delivering a high-quality product and energising the surrounding neighbourhood to generate huge value for our customers.

The following pages are designed to welcome you into the homes we have been creating all around the world. From apartments and retirement living to masterplanned communities and affordable housing.

We invite you to join us and find your place to live well.

Tony Lombardo
CEO, Lendlease



Defining a Lendlease home

Enduring quality of life

Curated and conscious

Made personal

Defining best in class living

Enduring *quality of life*

Enriching lives is the driving force behind everything we do. But it's more than just providing a home you love; it's enabling a lifestyle where convenience and community go hand-in-hand.

We design and deliver meaningful environments that contribute to your wellbeing, from expanses of natural greenery that inspire a healthy life, to public spaces that cultivate connection and belonging.

Lendlease Living means being at the centre of everything, in a place that supports your personal and professional growth. Our places embody quality of life for the long-term, so you can settle into your home with total peace of mind for the future.



Curated & *conscious*

We create places with a strong sense of identity and purpose; unique developments anchored by community, and warm, inviting spaces energised by the people who inhabit them.

Every detail has been intentionally curated to bring meaning and value to your day, from landscaping that connects you with nature, to open spaces inspiring recreation and relaxation.

We bring together retail, cafés and restaurants, co-working and creative collaboration hubs, easy-access health and wellness services and a refreshing integration of the indoor and outdoor. It's everything you need on your doorstep, in a place you're proud to call home.

Made *personal*

Everything we do is personal, because people are at the heart of our business.

We know that everyone is different, which is why we offer a wide range of living solutions, from masterplanned communities and retirement living, to high-rise apartments in global gateway cities. We are committed to delivering a consistent level of personalised service, quality and care — no matter where you choose to live.

Our homes also offer different levels of service integration and customisation; some with 24-hour concierge services and on-call doctors, others with amenities like event spaces, boutique fitness centres, outdoor exercise options and communal market gardens.

We are proud to create homes in which you feel safe and connected, that enrich you daily and support you for life.



Defining *best in class living*

We consistently innovate to set new benchmarks in residential living, drawing on our extensive knowledge of design and construction, aesthetics, best in class technology, and proven trends from our global projects.

Our legacy includes some of the world's most recognised residential buildings and landmarks and we collaborate with the biggest global names in architecture, design and real estate.

Natural light and connection to nature are central to our ethos. Imaginative customer-centric designs, clever layouts, enduring materials, beautiful interior finishes and cutting-edge architecture, make the homes we create special.



What goes into a Lendlease *home*?

Place & Community

Sustainability

Customer Care

Smarter by Design

Place & *community*

We create places
where people want
to be, and be part of.

Our homes offer more than just somewhere to live; they are anchored in carefully curated surrounds designed for social connection, wellbeing and convenience. They embody a sense of belonging in a place where local events and festivities, public art, culture and heritage are woven into the neighbourhood fabric.

They offer landscapes that inspire an active life, restorative natural spaces that promote wellbeing and celebrate the rich culture and heritage of the area, deeply respecting its history.

One of life's greatest joys can be found in human connection. That's why we build homes that bring people together through walkable, accessible neighbourhoods featuring shared spaces, natural surrounds and easy transport links.

This approach to creating great communities delivers you huge value in terms of quality of life and in the appreciation of your assets.





An energised precinct bringing vibrancy to the neighbourhood, Park & Sayer in Elephant and Castle, London, is an inspired mix of parks, restaurants, galleries, markets, shops and cafes. Residents enjoy amenities including a gym, elevated garden, business suite with complimentary fast Wi-Fi and a sky lounge with breathtaking views over London from the 360 degree terrace.



The exquisite rooftop deck at The Cooper, Chicago, is the perfect place to connect with friends and neighbours or find space to relax and absorb the view.

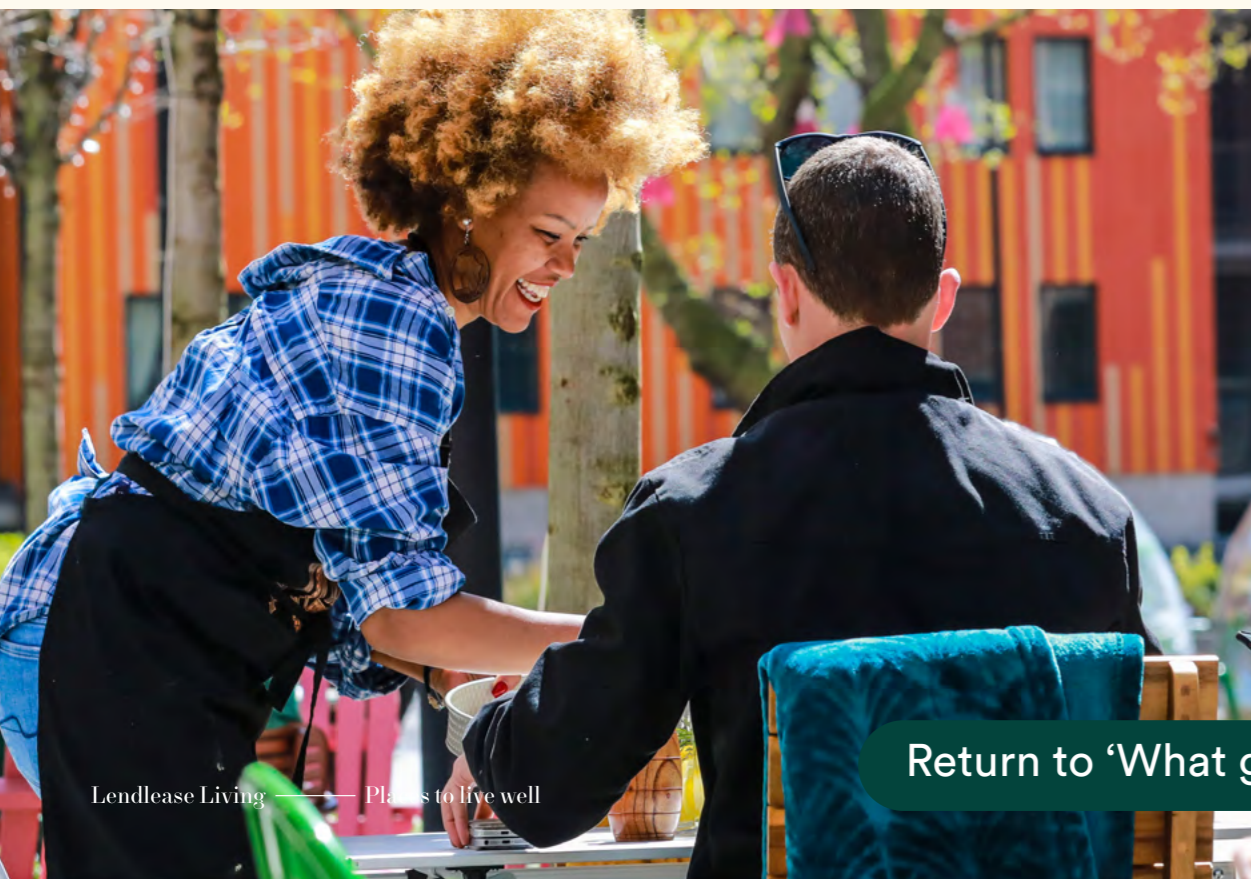
“Great places provoke an emotional connection between people and spaces”.

Intergenerational connection brings a sense of togetherness at **Paya Lebar Quarter, Singapore (right)**, where all ages are catered for. The cafés make the perfect place for adults to relax as they watch their kids delight in the adjacent outdoor playground.



Music brings people together at **Clippership Wharf in Boston**, where regular musical events encourage residents to throw open their balcony doors and enjoy live music in their homes, performed from a central square.

Friends and neighbours enjoy a shared love of cinema at the outdoor movie screenings at **Victoria Dockland's Community Hub, Melbourne**.



With its unique, warm and inviting atmosphere, **Elephant Park, London (left)** has a heart and a soul that permeates the neighbourhood. Street art, live performance and thoughtfully curated shops, bars and cafés reflect the vibrancy and diversity of the people who call this area home.

Return to ‘What goes into a Lendlease home?’

Sustainability

Sustainable living enhances quality of life, reduces expenses and increases property values.

Lendlease is at the forefront of sustainable building practises, materials, technologies and innovations that contribute to the greater good of all.

Our places set the standard for eco-conscious living and we are proud of our industry-leading net zero and absolute zero carbon goals.

We make a positive impact on the lives of our residents by integrating sustainable features that make being kind to the planet easy and value driven. For you, it means fresher air, bigger savings on utility bills and better connection to nature.

Residences One and Residences Two at One Sydney Harbour (pictured) has been awarded a 6 Star Green Star rating in Design by the Green Building Council Australia, with Watermans Residences also targeting 6 Star Green Star.



A community can't thrive if the world around it doesn't. That is why Lendlease has set a target to be a 1.5°C aligned company . We are on track to reach net zero carbon emissions by 2025 and absolute zero by 2040. We are focused on reducing waste, water and energy consumption and promoting biodiversity in our homes and neighbourhoods, to ensure a future where people and the planet prosper.

Sustainable innovations equal lower energy bills at **Park Place Residences at Paya Lebar Quarter, Singapore**, where high thermal performance, low consumption split air conditioning and water efficiency in all apartments means big savings and a smaller carbon footprint.

Paya Lebar Quarter was the first private, mixed-use development to be awarded the Singapore Public Utilities Board 'Active Beautiful Clean (ABC) Waters Certification.



Natural beauty meets environmental credibility at **Alkimos Beach**, our residential community in **Western Australia**, which is the first Australian community to achieve a 6-star Green Star Certification by the Green Building Council of Australia.





Artist impression. Subject to change.

Ambitious environmental targets will set a new benchmark at **Elephant Park, London (above)**, which will operate with net zero carbon when the project completes. Sustainable building, the preservation and planting of trees and a state-of-the-art combined heat and power (CHP) plant which provides low-carbon heating and hot water to over 3,000 homes and the community have all contributed this vibrant precinct's environmental credentials.

Biodiverse harmony is being restored at **The Exchange, TRX, in Kuala Lumpur (right)**, where more than 150,000 plantings of around 150 native plant species will create a new ecological corridor for urban birds, butterflies and bees.



Artist impression. Subject to change.



Artist impression. Subject to change.

Innovative design achieves next-level sustainability at **One Sydney Harbour, Australia**, where a revolutionary crystal-like, high-performance façade helps control heating, cooling and reduces energy consumption, whilst maximising natural ventilation and light.



Nature is regenerated at **Southbank, Chicago (left)**, where migratory birdhouses, beehives, rooftop farms, native flora and native grasses to restore the waterways have boosted the ecological health of the urban ecosystem. The community also benefits from a picturesque river walk and park.

Comfort comes first at **TRX Residences, Kuala Lumpur**, where optimal indoor temperatures can be achieved with lower air-conditioning intervention. The towers feature well-sealed envelopes to improve the building's air quality and energy performance, while windows have been treated to protect residents from harmful UV rays.

Precious resources are protected at **The Exchange, TRX, in Kuala Lumpur**, where potable water demand is being reduced by 50%. Water efficiency measures include maximising onsite rainwater retention and using of water recycling systems to recover over 80% of wastewater.

Putting the safety of residents in focus, **The Exchange TRX** platform was raised by 1.7 metres, to become an effective buffer against excessive rainfall.



Return to 'What goes into a Lendlease home?'



Net Zero Carbon across the board - achieved on our multifamily homes across Boston and Chicago, with new projects in New York City and Los Angeles now following suit.

Built for climate change resilience, the ground plane at **Clippership Wharf in East Boston** is elevated to account for the future rise in sea level.

Customer *care*

We want you to love your Lendlease home for the long term. That means creating the best homes and building strong, enduring relationships, that always put our customers first.

Customer experience and aspirations are at the heart of every home we create. This means putting people first, always delivering the highest quality of service with exceptional reliability and integrity and protecting your best interests at all times.

We listen to you and continuously test, enhance and personalise your experience when you buy or rent your Lendlease home.

We believe in open and honest communication and value your feedback, so we can do and be better. Have ideas about how we can achieve even more for you? Our door is always open.

Your customer *journey*

1.

Find your new home

No matter whether you are looking to buy or to lease, we are always looking for new and better ways to help you choose a home that suits the way you want to live. That's why we have developed a number of ways you can view your property, including in-person visits to sales suites and /or virtual viewings which let you 'walk through' your apartment.

Where possible, we also offer an online reservation platform that lets you directly reserve a selection of apartment options.

We partner with the best estate agencies around the world, ensuring our representatives know what it means to provide you with an outstanding experience.

2.

Track the progress of your new home

If you have purchased a home off the plan or one that is under construction, we make it our mission to keep you informed of its progress, giving you peace of mind every step of the way.

You can look forward to receiving development and or construction updates at various milestones and where possible, visiting your new home prior to settlement and handover.

3.

Moving into your new home

The day you walk through your front door for the first time is a milestone to remember.

You will collect your keys and receive a comprehensive handover pack which covers everything you need to settle in comfortably, so you can start creating memories in your beautiful new home.

4.

Discover your community

To enrich your sense of belonging, meet your neighbours and become acquainted with other locals, we regularly host housewarmings and gatherings designed to immerse you in your community and inspire social connections that could last a lifetime.*

*Subject to current allowances such as COVID restrictions and 75%+ occupancy levels

Our commitment

Our commitment runs deeper than simply delivering the high-quality design and development for which our homes are renowned.

It's about creating the best experiences together.

Peace of mind is part of the package. Our dedicated Customer Care, Lendlease Assist, Quality and Maintenance teams make it their priority to deliver the highest level of service and support to ensure enduring customer satisfaction and advocacy, now and in the future.



Our written promise

Our Lendlease Living **Customer Charter** is our written promise to:

- Be available, courteous and helpful via our dedicated customer service teams.
- Act with integrity and keep communication open, honest and fair in all dealings.
- Protect your privacy when handling your personal information.
- Value your feedback to improve our product and service offering.



[Return to 'What goes into a Lendlease home?'](#)

Smarter *by design*

We create thoughtful, human-centric spaces by immersing ourselves in your world to anticipate your needs.

Natural light and ventilation, quality materials, security, privacy and exceptional views are all hallmarks of our approach to creating your home.

We take our extensive knowledge of global trends, best practice design and partnerships with world-class designers to ensure every detail is meaningful. Our designs maximise space, minimise waste and always strive to exceed your expectations.

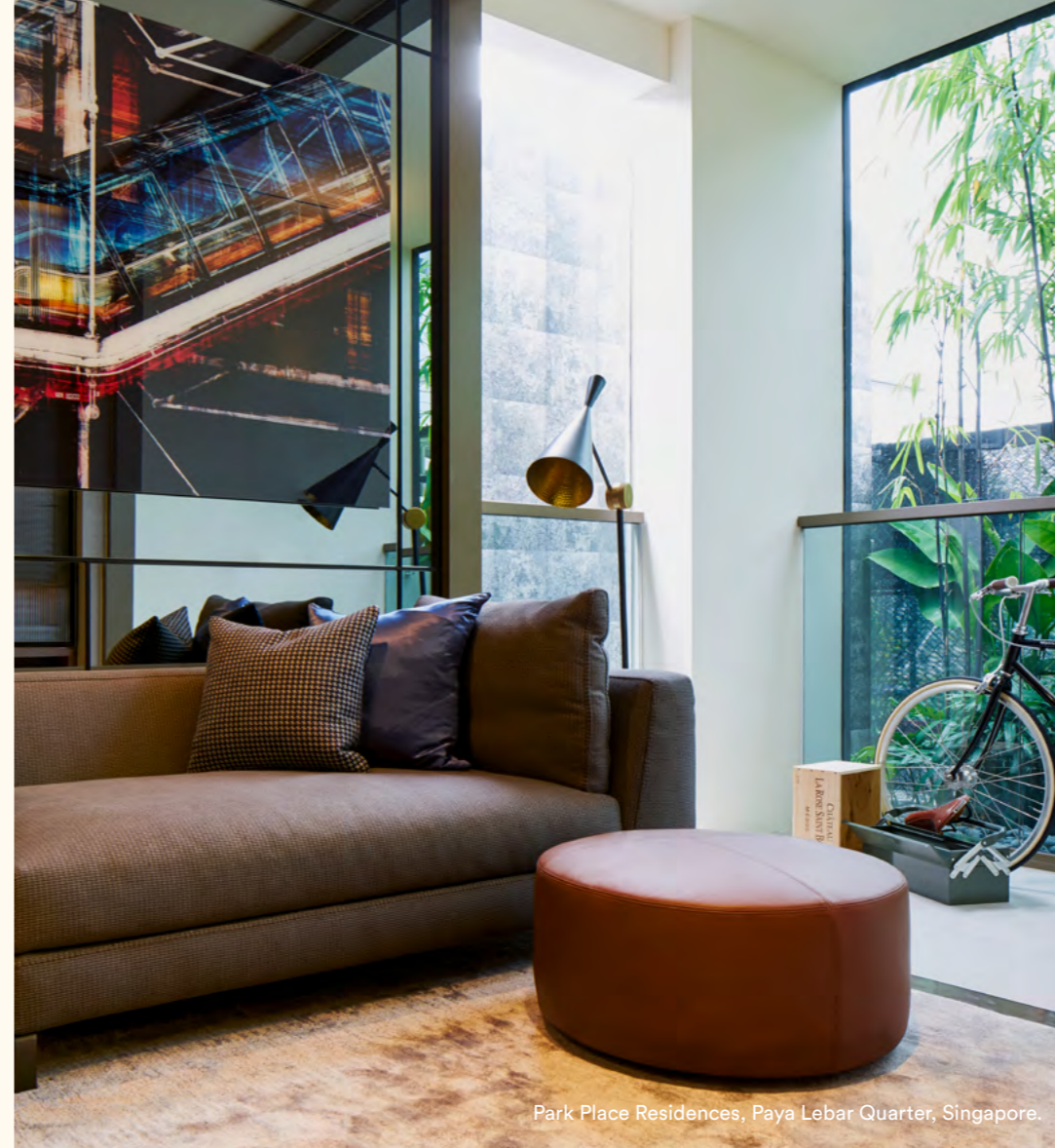
Design considerations

Our homes enhance your lifestyle by tailoring amenities to the location and community, immersing you in nature, connecting you with your neighbours and creating a sense of home in a place you love.

We set new benchmarks in residential property by collaborating with the world's leading architects and designers, creating timeless homes that respond to their surroundings and the cultural fabric of the neighbourhood.



Harpley Victoria



Park Place Residences, Paya Lebar Quarter, Singapore.

We maximise the value of your home with rooms designed to adapt to various family and lifestyle needs. Integrated amenities such as storage, utility space, bicycle rooms and workshop facilities further support your lifestyle.

Designed for living well, our layouts are carefully considered to enhance natural light, views and utility. We build homes defined by comfort and style, with quality materials, fixtures and fittings to create your welcoming comfortable haven.



Lease Living — Places to live well — Ardency Kennedy Place artist impression. Subject to change.



Lakeshore East artist impression. Subject to change.

Our homes foster a sense of wellbeing by maximising natural air and sunlight and using low Volatile Organic Compound (VOC) materials which are better for our health.

We keep families together with universal designs and layouts suitable for multi-generational living.

Functional private balconies and courtyards connect you with natural surrounds, while flexible layouts support work-life balance.



Convesso, Melbourne.

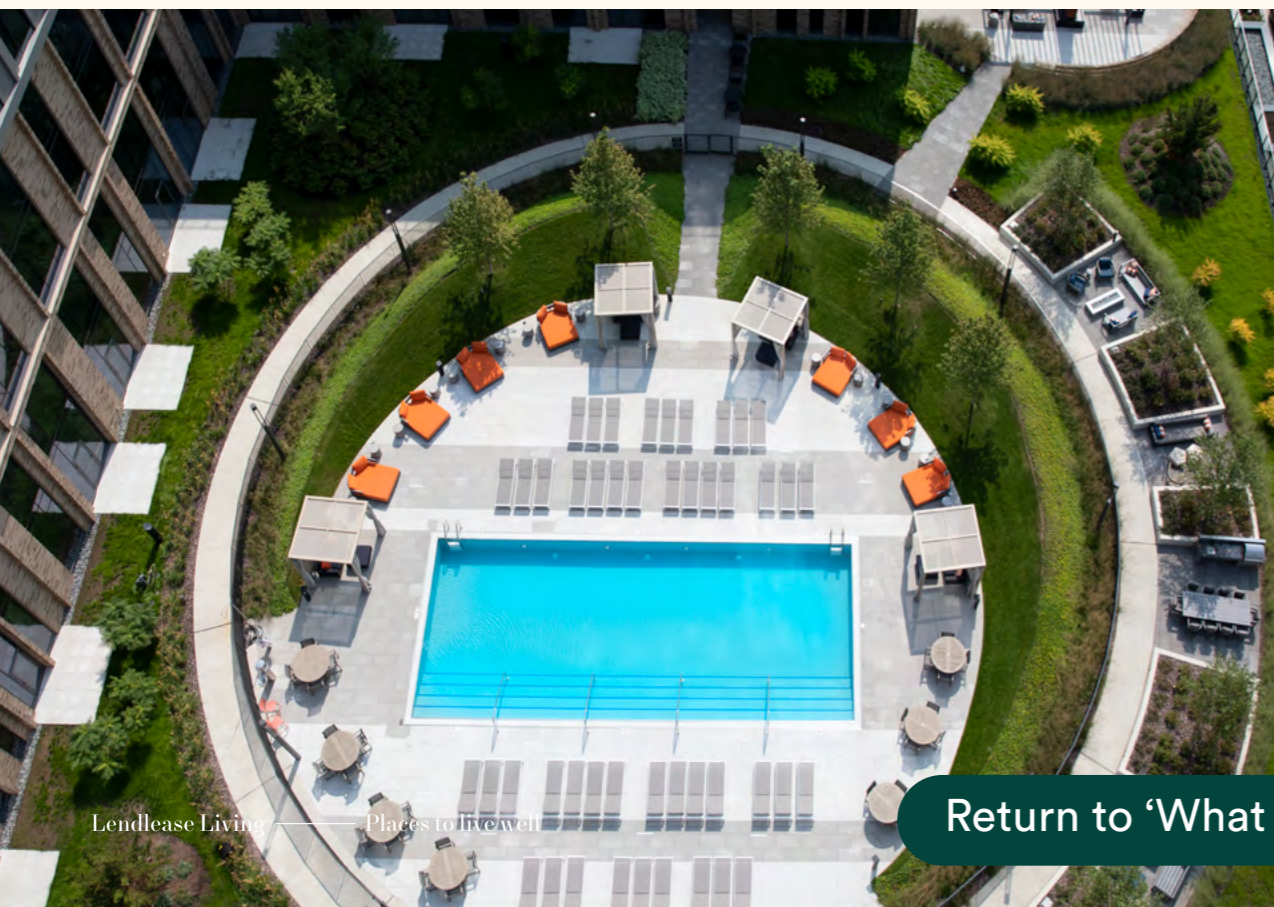
Smart home automation resides at the luxuriously appointed One Sydney Harbour (right), where residents operate lights, air conditioning, curtains and blinds, heated towel racks and floor heating (where applicable) via touch screens they can customize to suit their preferences. The same system acts as an intercom to your home and connects to the dedicated One Sydney Harbour mobile App, allowing you to engage your concierge service and book common areas and service lifts when required. Other features like keyless access throughout all resident access areas, remote issuing and revoking of digital keys and numberplate recognition in the carpark help to give our residents a strong sense of security and privacy.

The community is effortlessly connected at Porte (below), Cascade, Southbank and Lakeshore East in Chicago, where residents use a fully-integrated mobile app and web platform to manage their deliveries, guest access, rental payments and maintenance requests as well as staying up to date with the management and community communications. The mobile app can be used to book private spaces within the development and list items for sale in the virtual marketplace.



Smart, connected, convenient

Artist impression. Subject to change.



Everything at your fingertips - mobile app technology at TRX Residences, Kuala Lumpur (right) takes connectivity beyond the boundaries of our homes to include surrounding venues, precincts, neighbourhoods and the rest of the city. Residents can engage services, information, amenities, transport and so much more within an expanded digital ecosystem.



Artist impression of TRX Residences, Kuala Lumpur. Subject to change. 45

Return to 'What goes into a Lendlease home?'

Where in the *world* is your new home?

Americas

Asia

Australia

Europe



Americas

Live in *great design*



Artist impression. Subject to change.

Residents enjoy enviable views from the generous terrace decks and expansive rooftop amenity with cascading foliage form at **3401 S La Cienega Los Angeles** (above), designed by SHoP Architects.

Art and architecture converge at **Claremont Hall** in the stunning limestone-hued tower created by the renowned Robert A.M. Stern Architects, which rises from the Union Theological Seminary in the academic neighbourhood of **Morningside Heights, New York City** (right).



Artist impression. Subject to change.

Life is defined by exceptional design at **277 Fifth Avenue, New York City**, where architect Rafael Viñoly has ensured every residence features oversized floor-to-ceiling windows which flood the interiors with natural light and offer unrivalled views over Manhattan, including iconic landmarks such as the Empire State Building.



Live how *you like*

Expansive green spaces and outdoor lounge areas enhance wellbeing at **Hayes Point, San Francisco (below)**, where residents also benefit from a solarium and spa.



Thoughtful amenities support work-life balance at **Clippership Wharf Apartments, East Boston**, where quiet home office space meets lifestyle facilities including a fitness centre and exclusive lounges available to reserve for private parties.



Recreation and exploration set the scene for a vibrant life at **The Cooper Southbank, Chicago (left)** with access to two acres of publicly accessible green space, the Riverwalk, the Riverside Amphitheatre and a water taxi stop on the picturesque marina.



Artist impression. Subject to change.

Entertainment and exercise are at the heart of the **Clippership Wharf community in East Boston**. Residents regularly come together for sport and recreation events in this vibrant neighbourhood which enjoys local festivals, public art exhibitions, as well as an enticing mix of shops and restaurants.



Live in a vibrant community

We create places that cater to every aspect of your lifestyle, incorporating retail and services, co-working and creative collaboration, healthcare, transport and a thoughtful integration of outdoor and indoor spaces.

Lendlease is creating a dynamic variety of neighbourhoods over the next 15 years—in partnership with Google—in the **San Francisco Bay Area of San Jose, Sunnyvale and Mountain View (left)**. The project will bring a mix of condominium, multi-family and affordable housing to the region, which will be energised by the introduction of new neighbours.



Artist impression. Subject to change.

Fresh air. Green Grass. Trees and shade. Open space to connect. All of these things are key to wellbeing and embody our approach to design.

An abundance of green space draws residents outdoors in our **San Jose, Sunnyvale and Mountain View (above) communities in the San Francisco Bay Area**, where neighbours and friends will enjoy space to connect, exercise, and enjoy fresh air and sunshine.

Music and entertainment bring joy to residents at **Clippership Wharf, East Boston (right)** where regular live performances and outdoor movie screenings bring the community together.



Live *outdoors*



Landscaping is meticulously designed to connect you to nature and recreation, complement your home and add to the beauty of your surroundings. Enjoy year-round connection to greenery via a plant rich conservatory overlooking Cascade Park at **Lakeshore East, Chicago**. Surrounding open spaces planted with established trees create a nature-rich sanctuary, the perfect balance to an urban lifestyle.

Live with opportunity

We see the value in locations that offer opportunity, asset enhancement and growth, so we can provide you with a home that provides value in every sense of the word.

Commercial, civic and cultural life converge at **Hayes Point (below and right)**, set in San Francisco's thriving new hub.

Residences rise above a commercial tower from the 11th floor, with spectacular panoramic views of the city skyline.



Artist impression. Subject to change.



Artist impression. Subject to change.

Ideally placed between the fast-growing Culver City and West Adams neighborhoods, **3401 S La Cienega, Los Angeles (right)**, is an area ripe for transformation. Once complete, it will be surrounded by more than 30,000 square feet of public, open space, offering a superb mix of retail, entertainment and recreation options as well as a balance of workplaces, homes and transport links.



Artist impression. Subject to change.

Live in a reimagined neighbourhood



Artist impression. Subject to change.



Artist impression. Subject to change.

Every home we create is anchored in a community, with its own unique features and an inviting atmosphere at its heart.

Respecting the neighbourhood's rich heritage, **Claremont Hall at Morningside Heights (above)** has integrated the Union Theological Seminary campus and surrounding neighbourhoods, for the enjoyment of residents and visitors.

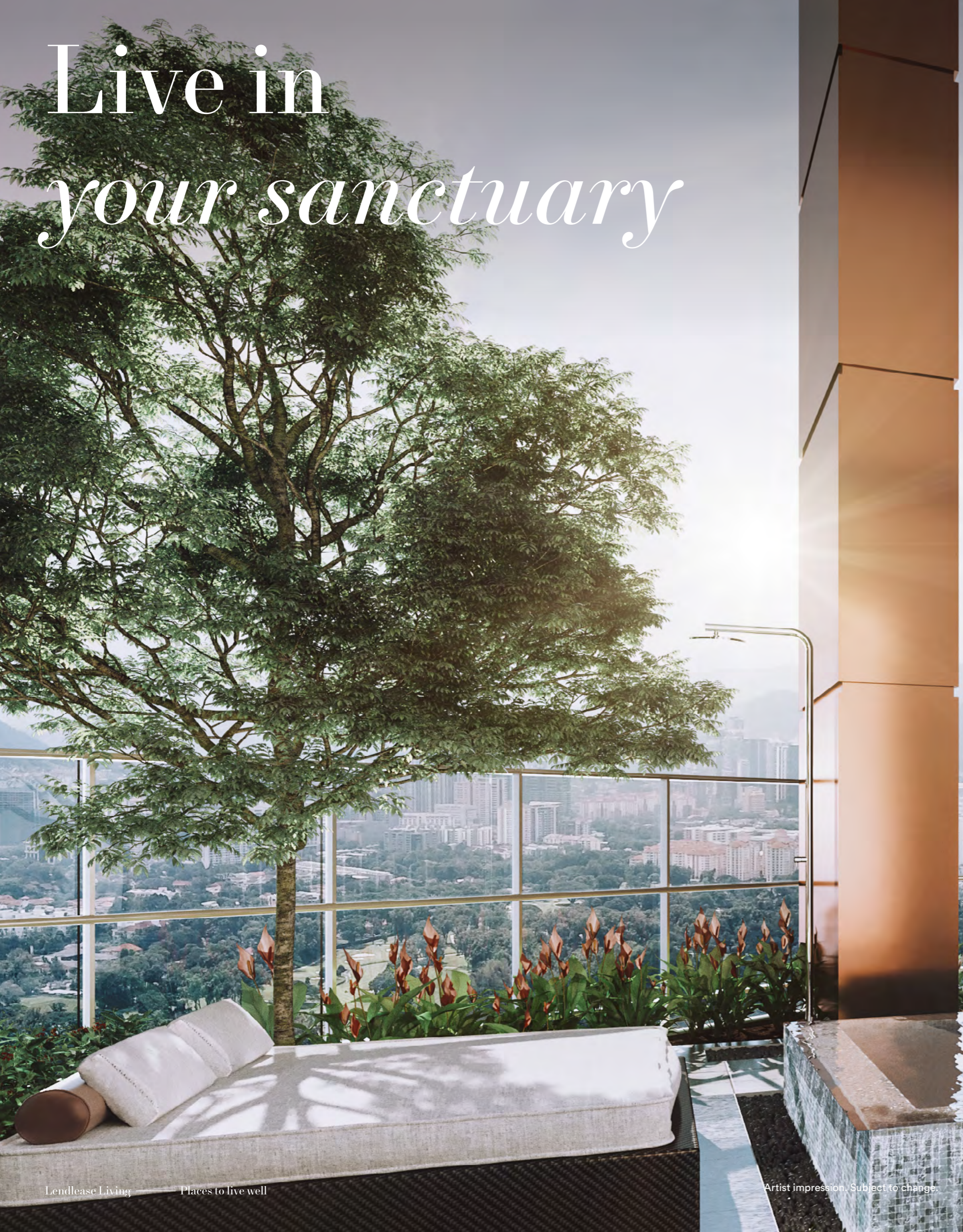
Bringing fresh vibrancy to the Greenpoint - Williamsburg waterfront, **1 Java, New York City (left)**, is revitalising the area with a new public esplanade and thoughtfully curated retail, dining and entertainment precinct, transforming life for its residents.

Return to 'Where in the world is your new home?'



Asia

Live in *your sanctuary*



Creating calming green havens is key to enhancing a sense of wellbeing. Our places offer a strong connection to nature and open spaces for recreation and relaxation.

Find peaceful respite from the buzz of the city in the lush, tropical setting of **Park Place Residences at Paya Lebar Quarter Singapore (above)**. It offers concierge services along with beautiful modern amenities including a landscaped deck, 50m lap pool and pool side cabanas. The entertainment suite, which can be reserved via a mobile app, is the perfect place to socialise.

Manicured gardens and water features provide relaxing, contemplative spaces for residents at **Ardor Gardens, China (right)**.

Appreciate the stunning view over the lush 45-hole golf course from **TRX Residences, Kuala Lumpur (left)**, framed by a picturesque mountain range in the background as the bustle of the city melts away.





Artist impression. Subject to change.

Recharge and connect in the calming hybrid space of The Conservatory at **TRX Residences in Kuala Lumpur**, where breathtaking views take centre stage, overlooking the spectacular city vista and the calming mountain range on the horizon.

Live in a *connected community*



Bespoke retail and service offerings, co-working and collaboration spaces, access to healthcare and thoughtful integration of outdoor and indoor spaces are just some ways we create and manage communities that people are proud to be part of.

Offering endless dining, shopping and recreation options, **The Exchange TRX, Kuala Lumpur (right)** is an energised public retail precinct spanning 2.2 million square feet.



A shopping lover's paradise, **Paya Lebar Quarter, Singapore (left)**, features more than 200 retail stores and is an epicentre for public events, food and drink destinations, festivals and music performances, putting you in prime position to enjoy everything on offer.

The new social heart of **Kuala Lumpur** can be found at **The Exchange TRX (below)** where world-class integrated living meets retail, 10 acres of parklands, a hotel and campus-style workplaces, seamlessly woven into a thriving precinct.



Featuring a variety of facilities to delight and engage every age, the Events Lawn of **TRX City Park (left)**, offers everything from children's playgrounds and forest walks to water gardens.



Live *sustainably*

The climate is always perfect for residents of TRX Residences, Kuala Lumpur, where double-glazed low emissivity glass windows filter out heat, noise and UV rays and a mechanical ventilation system circulates the air, collectively reducing the reliance on power consumption.



Live well



We're committed to providing our residents with the resources to live an active, healthy life. That's why progressive fitness and wellness facilities are key features of our homes.

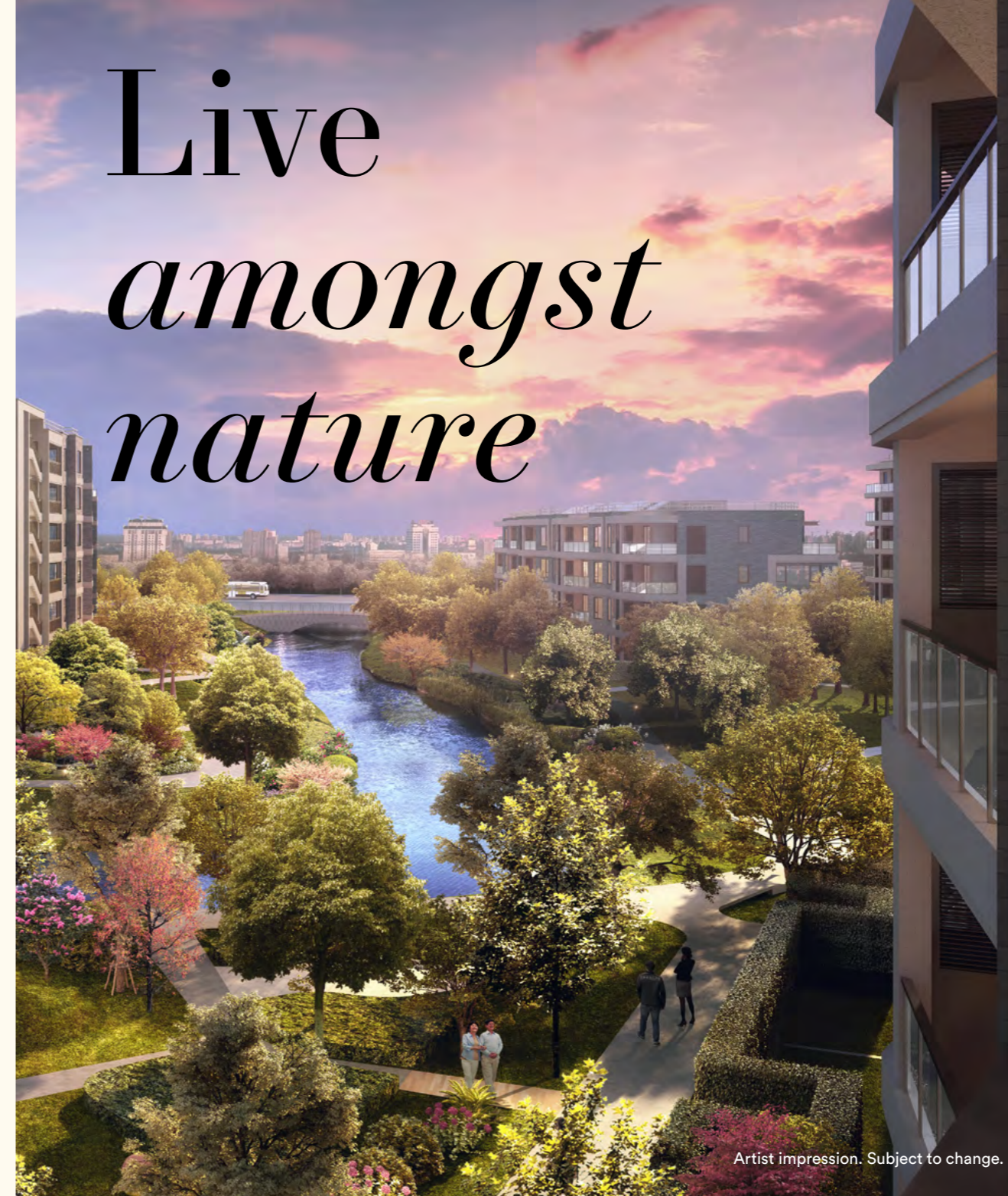
Safety, security and support is at the heart of **Ardor Gardens, China**, the first senior living community in China to receive the WELL Health and Safety Rating (WELL HSR), in recognition of its safety-first and sustainability focus.

This premium retirement living development boasts private health and wellness amenities, including recreational areas, a clinic, spa, swimming pool (left) and a large community clubhouse where residents can socialise, make new friends and enjoy the sense of belonging.

Enjoy workout spaces designed to work for you at **TRX Residences, Kuala Lumpur (below)**, where residents can choose between a Metcon gym or a conventional gym according to their individual needs and fitness levels.



Live *amongst* *nature*



Artist impression. Subject to change.

Thoughtful landscaping seamlessly integrates our homes with the natural surrounds, connecting you with tranquil spaces ripe for recreation, relaxation and everything in between.

Serving up daily serenity with lush greenery, landscaped gardens and natural waterways, **Ardor Gardens, China (left)**, is located on the bank of the beautiful Lake Dianshan and close to Zhujiajiao town. Landscape architects drew inspiration from the nearby historic Zhujiajiao water village to create a truly special place.

Immerse yourself in tranquillity at **Paya Lebar Quarter, Singapore (below)**, where verdant landscaping, recreation areas, rain gardens and kids' play areas cater for all ages.

Harmony and biodiversity go hand-in-hand at **TRX City Park at The Exchange TRX, Kuala Lumpur** where more than 150,000 plantings of around 150 native plant species will create a new ecological corridor for urban birds, butterflies and bees.



Artist impression. Subject to change.



High amenity *living*

From premium retirement living to luxury apartments, everyone has different requirements to live a comfortable life. Our wide range of services and amenities ensures your home will meet your needs and enrich your every day.

Relax and unwind by the lap pool, book an event space to host parties with friends or entertain the kids in the multisensory play area. A dedicated Concierge Desk is located in the lobby to provide assistance when you need it.

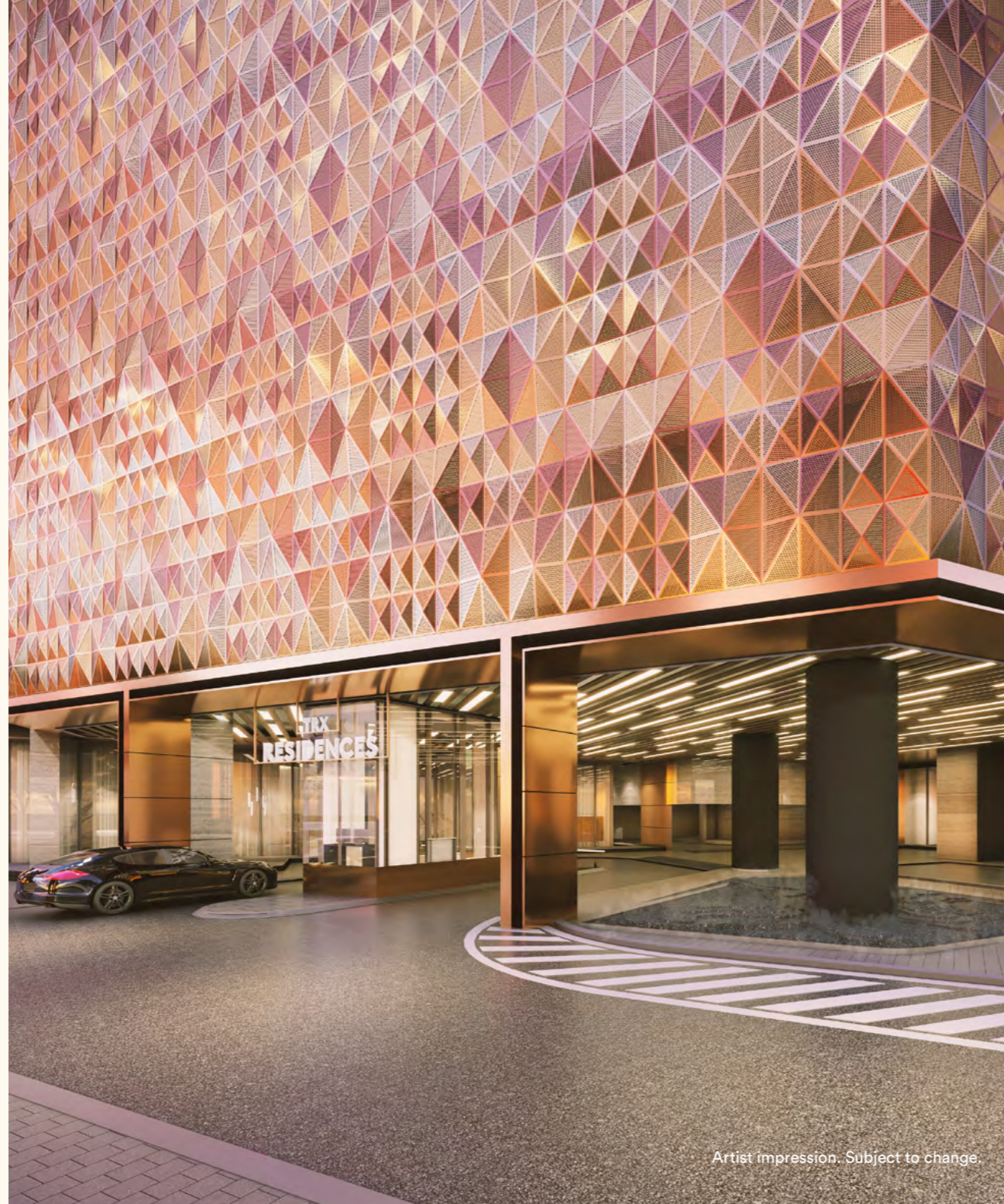
Residents are spoilt for choice at **TRX Residences, Kuala Lumpur (below)**, where more than 29 amenities spanning 90,000 sq ft offer an extensive range of life-enhancing extras.



We create homes that challenge the status quo, setting new benchmarks for residential living with innovative architecture and smart designs. Spacious living is not just about square feet, but clever layouts that maximise flow.

Residents enjoy a sense of generous space at **TRX Residences, Kuala Lumpur (right and below)** with intuitive design that makes clever use of every available square foot.

The sculptural treatment of the **TRX Residences' porte cochère (right)** is more art installation than building facade.



Artist impression. Subject to change.

“More art installation than building facade”

Live in *great design*

Discover high-end interiors, impeccable style and premium materials that make all of our homes feel exceptionally special.

Enjoy five star style at **Ardor Gardens China (left)**, where interior schemes are reminiscent of a premium hotel resort.

Calming colours come together at **Park Place Residences, Singapore (below)**, rewarding the eye with serene tones which pair perfectly with the abundance of lush greenery.

Snaidero fitted kitchens, complete with Smeg appliances, strike the right balance between striking aesthetics and high functionality.



Lendlease Living — Places to live well

Artist impression. Subject to change.



Artist impression. Subject to change.

Live *socially*

Entertaining friends and family is a joy at **TRX Residences, Kuala Lumpur (right)**. Host gatherings indoors, outdoors, or enjoy a combination of the two, in our exclusive use dining rooms catered by your private chefs.

Alfresco barbecue stations with a stunning city skyline backdrop, create memorable moments with family and friends.

Alternatively, select from a host of food and beverage options at **The Exchange TRX**.



Return to 'Where in the world is your new home?'



Australia

Live in *the light and air*

Australia's natural landscape is some of the most striking in the world. Natural light and connection to nature are vital elements in everything we do, with homes that reflect the beauty of their surroundings.

One Sydney Harbour's residences (**right**) connect with the natural environment through architect Renzo Piano's exquisite design, reflecting both the sea and the sky.

Living and dining spaces are as grand as they are intimate, with floor to ceiling windows opening up to a magnificent vista of one of the world's most beautiful harbours.

Enjoy the sparkling waterfront ambience and Sydney's coveted outdoor lifestyle from the winter gardens replete with breathtaking views of one of the world's most beautiful harbours.



Live with *social connection*

Victoria Harbour (below and right) is a buzzing neighbourhood with a strong sense of community, just five minutes from Melbourne's CBD.

Public celebrations and events regularly bring residents together, enriching the area's warm, exciting atmosphere with fun and entertainment.



Live in a *CBD playground*

Vibrant new flavours, sights and sounds await at **Darling Place Sydney (left and below)**.

Whether it's exploring the quirky cobblestone laneways lined with over 60 shops, restaurants and cafes, playing at the mah-jong tables by the central village green, or meeting friends at the communal dining areas, there's always lots of activity drawing residents together.



Sophisticated living

Defined by 5-star standards, personal service and luxury amenities, **Ardency Kennedy Place in Melbourne (right and below)** is the heart of a connected, active and vibrant retirement living community.

This connected, active community, enhances residents' lives with resort style amenities including private cinema, library, wellness centre and more.

“Defined by 5-star standards”



Living with Lendlease means more than just your home. It's the smart features, premium services and unexpected luxuries that make each day better than the last.

Uber-luxurious spaces and services enrich the lives of residents at **MQ, Melbourne Quarter (left and below)** with numerous options for relaxation, recreation and entertainment.

Residents enjoy access to three floors of impeccably-designed resort-style amenities at Club MQ, including a state-of-the-art gym, private dining with fully-equipped kitchens, residents' lounge, movie theatre and a 25 metre indoor pool with spectacular city-skyline views.





Artist impression. Subject to change.

More than 50% of **Melbourne Quarter's** six acre masterplan is dedicated to public open space, offering unique green spaces to relax and unwind. It's an exciting addition to one of the world's most liveable cities, bringing new vibrance to the area.

Live amongst *nature*



Residents regularly share time planting seeds and tending crops at **Ardency Kennedy Place in Melbourne (above)**, where a shared communal market garden provides the community with fresh produce.

The view is spectacular every day at **Yarrabilba in Queensland (right)**, where connection to a nature reserve and the rising backdrop of Mount Tambourine make it a beautiful place to call home.

Designed to inspire an active outdoor lifestyle, this masterplanned community features a growing network of walking and cycleways through parklands. It's a place defined by an active, healthy lifestyle, fuelled by a thriving community, strong local job opportunities and inspiring education options.



Live *sustainably*

We create places that make sustainable living effortless.

At **Alkimos Beach in Perth**, Australia's first 6-star Green Star rated community, practical environmental solutions are integrated into daily life.

The community has been designed in harmony with its natural surrounds, with over one third of the area dedicated to parks, bushlands and playing fields.

With spectacular beaches, numerous amenities and a vibrant connected community, it's a neighbourhood offering the perfect balance of work, life and belonging, and a lifestyle that's relaxed, fun and social.



Live a redefined *urban lifestyle*

World class dining, landmark waterfront parks and an inspiring collection of public art characterises **Barangaroo South (below)**, one of **Sydney's** most desirable and sustainable CBD neighbourhoods.

Reinvigorating the social, environmental and economic resilience of an area is an art that Lendlease has mastered, and Barangaroo South is indeed evidence of this.

One of Sydney's most beloved skyscrapers, **Aurora Place, Sydney (right)**, is the first partnership between master architect Renzo Piano and Lendlease in Australia. Situated in the heart of the city's CBD, Aurora Place and Macquarie Apartments feature Renzo's distinctive glass louvres, with its curved façade paying homage to the Sydney Opera House sails.



Return to 'Where in the world is your new home?'



Elephant



Artist impression. Subject to change.



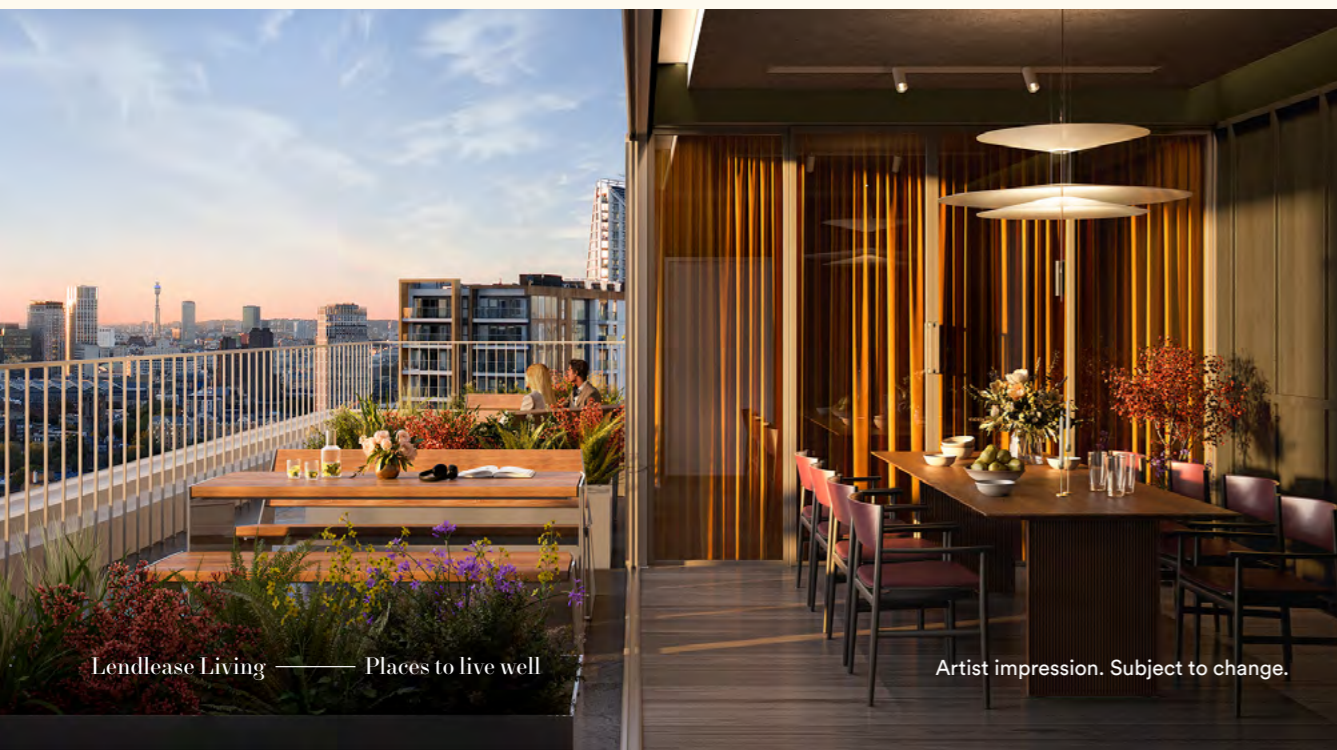
Artist impression. Subject to change.

Live *amongst friends*

Connecting with people, cultivating friendships and having a sense of belonging in your community is one of life's joys. It is a feeling we build into our places, creating homes where you feel safe, secure and supported.

Shared spaces throughout **Park & Sayer, Elephant Park, London** (left and below left) provide a range of places to relax, work, study and meet, including a shared roof deck, communal market gardens and co-working hub.

It is an environment that inspires connection, collaboration and enjoyment in one of the world's greatest cities.



Artist impression. Subject to change.

Communities come together with a shared purpose at **Park & Sayer Elephant Park, London** (above and left), where communal market gardens inspire neighbours to grow fresh produce.

Residents boost their health and fitness in their private gym (right).



Artist impression. Subject to change.

Our approach to creating great communities means delivering value that increases your quality of life and the appreciation of your investment.

Milan Innovation District (MIND) (below) is transforming the former Milan Expo site, with a c250 acre mixed use redevelopment, aimed at becoming a world-leading science, knowledge and technology hub.



Artist impression. Subject to change.



Artist impression. Subject to change.

Live in a *growing asset*

Secure your place in an area undergoing a huge evolution, such **Deptford Landings, London (left and far left)** where regeneration spans over 4.7 hectares, surrounded by c11 hectares of parkland.

Silvertown Quays London (below) is being given a vibrant makeover, reviving the area and reconnecting it with its rich heritage.

It is a waterside destination, bursting with potential; a thriving place perfect for living, working and socialising.

The area's industrious past will be reignited, attracting local talent, increasing employment and energising all who share the neighbourhood's enterprising ideals.



Artist impression. Subject to change. 95



Artist impression. Subject to change.

Live amongst *nature*

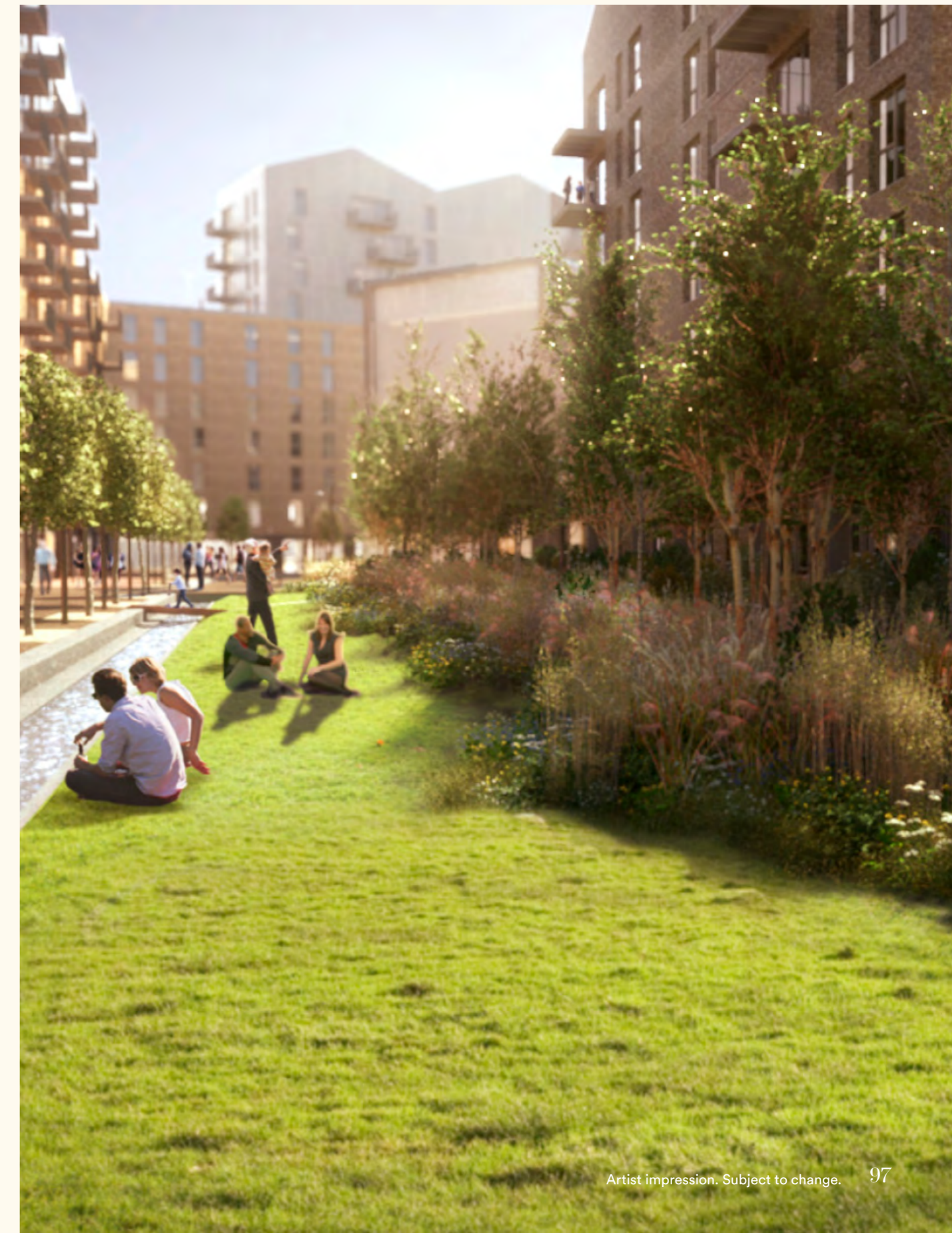
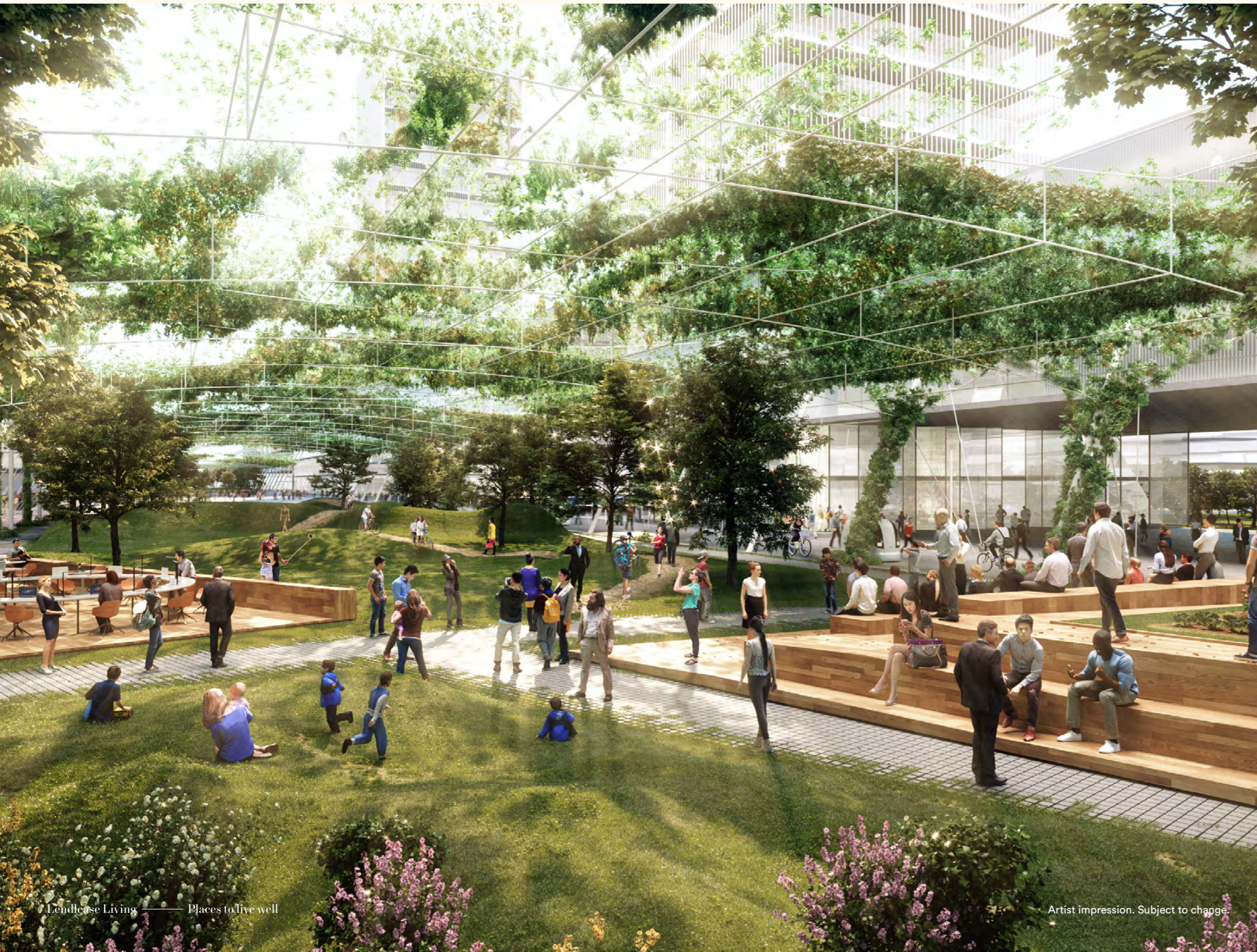
The benefits of living in nature are well known. That's why we make lush green spaces a priority, for a lasting positive impact on our residents' health and wellbeing.

Residents and visitors regularly enjoy the fresh air and sunshine in the heart of **Milan Innovation Centre (MIND) Milan, (below left)** where public green space provides the perfect place to meet and relax.

Relax and unwind in your natural surroundings at **Deptford Landings, London (below)**, where every home is wrapped in

layers of greenery, with private outdoor spaces and views over garden courtyards or parkland.

From fresh green spaces to pretty pockets of wilderness, find shade under one of the 300 planted trees, including Oaks and Maple, Magnolia and Sweetgum, or enjoy a moment of mindfulness by the calming water feature.



Refined *living*



Maximising the sensational views outside every residence has been key to the architectural approach at **Park & Sayer London** (all images).

Artist impression. Subject to change.



Artist impression. Subject to change.

Renowned architects, Arney Fender Katsalidis, and leading interior design firm Johnson Naylor, worked with us to define best in class living at **Park & Sayer London** (all images).

Beautifully crafted interiors, selected to reflect the textures and spirit of the surrounding Elephant Park, are central to the development's premium quality design ethos.

Balconies provide access to fresh air and a serene space from which to enjoy the vibrant world below, while the interiors have been meticulously designed with comfort in mind, to ensure living here is a joy.



Endless Living

Plan to live well

Artist impression. Subject to change.

High-end finishes extend to the communal areas, including the shared rooftop terrace (right).



Return to 'Where in the world is your new home?'

Artist impression. Subject to change.

99

The *value* in regeneration

Identifying *opportunity*

We define value as being beyond the financial. For over 60 years we have built our reputation on seeing the opportunity in places that others may overlook, delivering a high-quality product and energising the surrounding neighbourhood to generate exceptional value for our customers.

At the turn of the 21st century, Barangaroo was a disused container terminal – a physical barrier to Sydney's Western Harbour.

Lendlease has transformed the area into a dynamic cultural, residential, business and civic hub. It is one of Australia's first carbon-neutral neighbourhoods and has attracted numerous urban design and sustainability awards.

Over 50% of Barangaroo is dedicated open public space and the connections to Sydney's traditional CBD have been greatly enhanced.

Residents and visitors can choose from a carefully curated collection of over 90 shops and restaurants.

To demonstrate the value created at this previously under-utilised site, One Sydney Harbour, located in the Barangaroo South precinct, recently broke residential records in Australia, releasing the most expensive home ever sold, as at October 2019.



Regeneration *effect*

With a bold new vision for vibrant and convenient urban living, Elephant and Castle, London is being reinjected with the energy for which it was once famous.

Building on the area's strong heritage, Lendlease is transforming the entire neighbourhood, creating a new urban residential precinct, **Elephant Park (below)** with over 3,000 high quality new homes. With around 6,000 jobs being generated, as well as exciting business opportunities including space for over 50 retailers, this new era of prosperity will be shared across the community. Further, over 1,200 newly planted trees are expanding precious green space for Londoners.



Clippership Wharf, Boston (left), has totally transformed a site that had been left to decay for over thirty years.

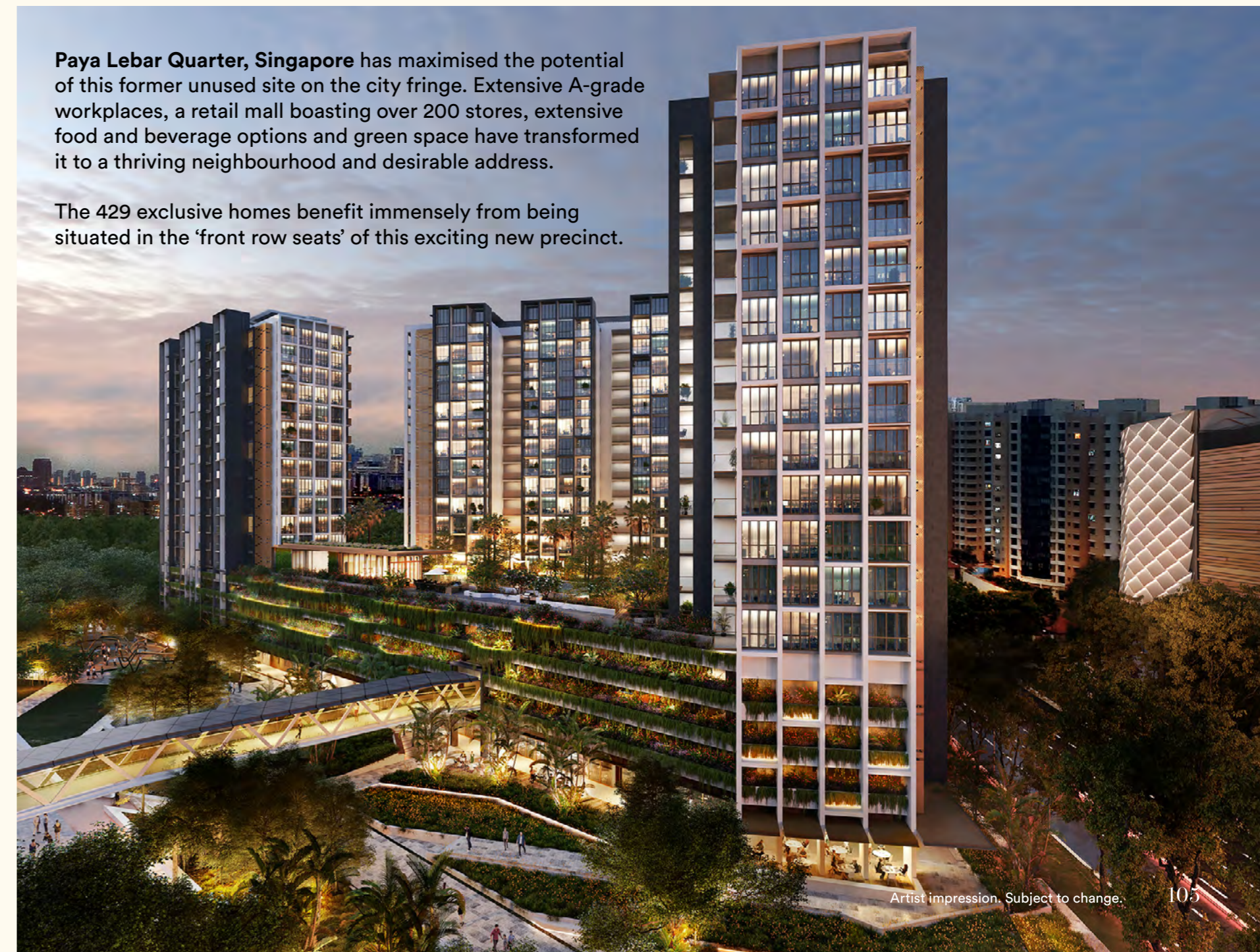
The regenerated historic wharf site has been a catalyst for an exciting new era of prosperity and community spirit in the area.

It has reclaimed some of the best views of Boston's skyline for residents and visitors, and given people access to this previously obstructed stretch of water.

The success of Clippership Wharf's first residential release prompted the early launch of the second offering.

Paya Lebar Quarter, Singapore has maximised the potential of this former unused site on the city fringe. Extensive A-grade workplaces, a retail mall boasting over 200 stores, extensive food and beverage options and green space have transformed it to a thriving neighbourhood and desirable address.

The 429 exclusive homes benefit immensely from being situated in the 'front row seats' of this exciting new precinct.



The Lendlease story

We create places where
communities thrive





We are proud of our history, spanning more than 60 years, of creating some of the world's most iconic landmarks, and establishing ourselves as a leading global integrated real estate and investments group.

With a development portfolio that spans the Americas, Europe, Asia and Australia, Lendlease has become synonymous with quality and value.

Our projects include the creation and restoration of internationally famous icons like Sydney Opera House, Sydney's Barangaroo South, project management of Petronas Twin Towers in Kuala Lumpur as well as the National September 11 Memorial and Museum in New York, the Statue of Liberty, London's Big Ben Elizabeth Tower, Tate Britain and the British National Theatre.



Global presence *gateway cities*



Major urban regeneration global portfolio



Elephant Park, London UK



Sydney Place, Australia



Victoria Cross Over Station Development, Sydney Australia



Barangaroo South, Sydney Australia



Silvertown Quays, London UK



High Road West, London UK



Deptford Landings, London UK



Victoria Harbour, Melbourne Australia



Melbourne Quarter, Australia



One Circular Quay, Sydney Australia



Thamesmead Waterfront, London UK



Euston Station, London UK



Smithfield, Birmingham UK



Lakeshore East, Chicago USA



Southbank, Chicago USA



1 Java Street, New York USA



International Quarter London UK



Milan Innovation District, Italy



Milan Santa Giulia, Italy



Hayes Point, San Francisco USA



San Francisco Bay Area Project, USA



The Exchange TRX, Kuala Lumpur Malaysia

Our *integrated* business model

At Lendlease we have the expertise and capability to ensure the end-to-end experience is seamless.

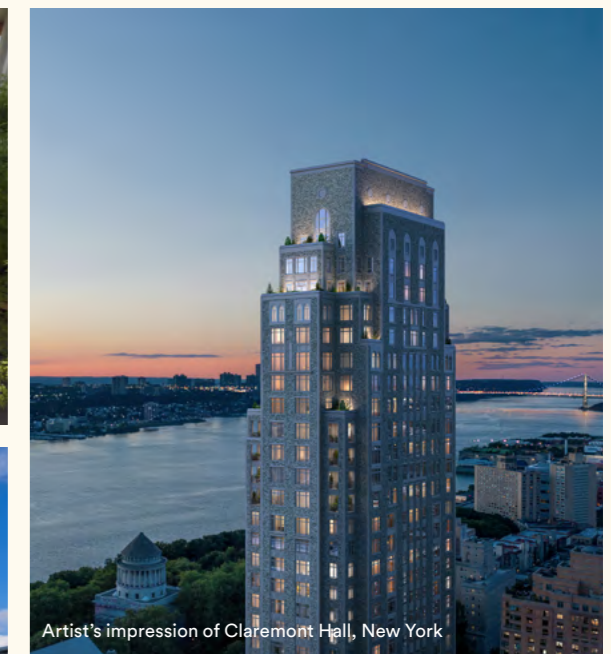
Our integrated business model encompasses development, construction and investment teams who work together across the entire project lifecycle from development through to delivery, capital structuring and ongoing operations.

Our all-encompassing approach sets us apart, allowing us to deliver a cohesive, efficient, and innovative process, focused on common outcomes.

We leverage our strong balance sheet along with our external capital partnerships, enabling us to have both capital agility while also holding assets in a variety of structures over the long term.

We have longstanding relationships with numerous trusted capital partners who place value in our proven capabilities and global pipeline of opportunities.

The breadth of our relationships coupled with our track record in placemaking and delivering large scale urbanisation projects allows us to navigate and match both property and capital solutions over the multiple phases of major projects and through economic cycles.



Our residential products

At Lendlease we believe living should be about connecting people and place.

That's why we create homes that bring people together through shared spaces and a sense of community. Our masterplans are designed to be walkable and accessible, with thriving natural landscapes and convenient transport links.

Apartments (open market sale)

Smart designs and quality materials are the hallmarks of our apartments, which place a premium on natural light and ventilation, security, privacy and views. Our places maximise space and minimise waste, creating a comfortable, sustainable lifestyle to love, in a neighbourhood you are proud to call home.

As of June 2022, we are currently delivering 12 major apartment developments as part of our Major Urban Project pipeline across the Americas, Asia, Australia and Europe.

Our apartments offer people living in cities long-term value and enduring quality of life.

Build to rent / Multifamily

Our Build-to-Rent / Multifamily offering comprises developments that put our residents at the centre of an amenity-rich lifestyle, enhancing health, wellness and convenience.

Our Build-to-Rent / Multifamily portfolio is forecast to create over 18,000 homes in the coming years, across global cities including London, Sydney, Melbourne, Chicago, New York, Boston, Los Angeles and San Francisco.

Our rental portfolio offers a diverse range of living options from luxury residences to affordable housing, often integrated within the one development.

Affordable Housing

In major gateway cities across the world, we are delivering Affordable Housing as part of both our Urbanisation and Construction portfolios.

Although delivery approaches and mechanisms differ between regions and cities, the Affordable Housing that we create targets those individuals and families burdened by the housing affordability crisis.

Providing housing is just one aspect of how we are helping people and communities to thrive. We are tracking to achieve our global Social Value target to create AUD \$250 million of social value over and above project or asset obligations by 2025.

Examples of focus areas include addressing homelessness and housing stress, providing pathways to employment for refugees, community upskilling, supporting minority owned businesses, addressing urban loneliness, supporting local business through affordable tenancies, skills exchanges and community parks and spaces.

Communities

From urban villages in exclusive waterfront locations to large neighbourhoods with integrated town centres, Lendlease has created more than 50 masterplanned communities around the world.

Our communities are designed with an emphasis on environmental and social impacts and our focus is to enrich the lives of our residents both now and for generations, fostering opportunities for connection, collaboration and growth.

We work closely with the local community, businesses and councils to ensure every development we create is a landmark project.

In the United States, Lendlease's Communities portfolio spans across 24 states, the District of Columbia and Puerto Rico.

In Australia, Lendlease delivers new housing estates and subdivisions in strategic growth corridors in Sydney, Melbourne, Brisbane and Perth. Across 15 projects in 4 states, there are approximately 70,000 subdivided lots already built or currently being delivered. While all of our communities are unique, what they share in common is a commitment to living well.

Retirement Living

With more than 30 years' experience in the sector, Lendlease is one of Australia's largest owners, operators and developers of retirement living communities. We're also at the helm of the first flagship retirement living project in China.

Our retirement living communities offer not only rewarding places to live, but experiences that enhance wellbeing, with gold standard facilities and services, dining and entertainment typical of our other residential developments.

Our villages are safe and secure, socially engaging, environmentally conscious and above all, resident-focused; the perfect environment in which to enjoy a new phase of life, with the support to focus on the things that matter most.



Lendlease Headquarters

Lendlease Australia +612 9236 6111
Lendlease Europe +44 (0) 20 3430 9000
Lendlease Americas +1 212 592 6700
Lendlease Asia +65 6671 6600

[@lendlease.living](#)
[lendlease.com](#)

Disclaimer: The material contained in this brochure has been produced prior to completion of detailed design and construction of some featured projects. As such, this material does not constitute a representation by the Developer, Vendor or the Agent in respect of the actual size, form, dimensions, specifications or layout of the apartments, other parts of the building or surrounds. Lendlease does not accept responsibility for any action taken by intending purchasers in reliance on the information in this brochure. The final product may vary from the images shown. Some images are artists impressions only and furniture is not included unless otherwise stated in the contract for sale. Any view lines shown are indicative only as at the date of publication. Actual views may vary on completion from that shown. View lines may be impacted by current and future development applications. Changes may be made to the detailed layouts during development and construction in accordance with the provisions of the contract for sale or planning or authority requirements. Prospective purchasers must make and rely on their own enquiries. Produced by Lendlease (insert entity) August 2022.